

KYOTO COLLECTION STORY

Jiun Ho expands the design dialogue he began with his Japan collection in a new textile line that celebrates the beauty and culture of Kyoto. A mix of outdoor and indoor, the seven new fabrics follow the traditional techniques of Japanese textile making. Each reveals subtle details, each explores the rich interplay of colors that create a feeling of antiquity, and all are a delicious blend of natural fibers. The Kyoto collection deepens Jiun's vision of modernity and textured tranquility, all wrapped in luxe materiality.

Check your favorite fabric swatches to order samples.





I was 9 years old when I visited Kyoto for the first time. It was cherry blossom time and I had never experienced anything like the beauty that was everywhere I looked, a memory that has stayed with me all my life. I return to Kyoto periodically; biking around this historic, complex, and spiritual city. I find inspiration in every garden, alley, corner, and temple. My new textile collection honors Kyoto, its pieces are my attempt to translate the confluence of meaning, memory, and inspiration that this special city evokes in me. I am so happy to have the opportunity to share it all with you in these pages.

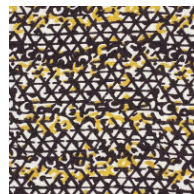
With appreciation,
Jiun Ho

HANAKAGO

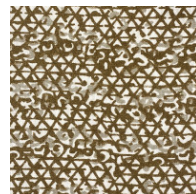
Named for the Japanese flower baskets traditionally woven of a tangle of bamboo, this special indoor/outdoor print features an organic graphic design punctuated by colorful pops.



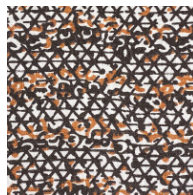
1089-08_Taro



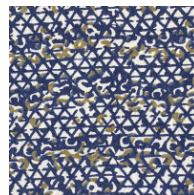
1089-19_Black Sesame



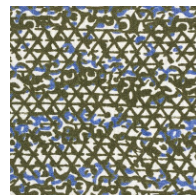
1089-29_Bronze



1089-39_Japanese Maple



1089-69_Indigo



1089-89_Matcha

Primary Fiber Content: **100% UV Polyester**

Fabric Type: **Print Performance Outdoor**

Performance: **Performer High Use Indoor/Outdoor**

Shown Direction: **Up the Roll**

Seam Slippage: **WARP>200**

Wear: **Martindale 80,000+**



YUGEN

Yugen is an aesthetic concept relating to wabi-sabi, and implies mystery and profundity. The indoor/outdoor chenille textile inspired by this concept has a matte finish and a soft hand.



1085-01_Washi



1085-06_Taro



1085-15_Rock Garden



1085-66_Mizu



1085-93_Wasabi

Primary Fiber Content: **100% UV Polyester**

Fabric Type: **Texture Plain Chenille Performance Outdoor Contract**

Performance: **Performer High Use Indoor/Outdoor**

Shown Direction: **Up the Roll**

Light Fastness: **4/5**

Wear: **Wyzenbeek 60,000+**





UMAMI

A delicious, heavy blend of yarns, colors, and textures, the Umami textile is woven by a boutique linen mill in Belgium.



1079-09_Sea Salt



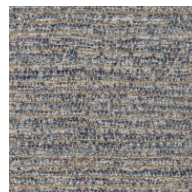
1079-19_Shiitake



1079-29_Whiskey



1079-49_Toro



1079-66_Nami



1079-96_Shisō

Primary Fiber Content: **79% Linen**

Fabric Type: **Texture Plain Jacquard Boucle Slub**

Performance: **N/A**

Shown Direction: **Up the Roll**

Use: **Fabric Upholstery Cushions**

Wear: **Martindale 20,000+**

TATAMI

This substantial indoor/outdoor fabric, inspired by Japanese floor mats, has an uneven rib effect and a dry hand, creating a modern appeal.



1083-01_Washi



1083-05_Pearl




1083-10_Shiitake



1083-17_Sureto

Primary Fiber Content: **100% Solution Dyed Polypropylene**
Fabric Type: **Texture Plain Boucle Outdoor Slub Ottoman/Rib**
Performance: **Performer High Use Indoor/Outdoor**

Shown Direction: **Up the Roll**
Seam Slippage: **N/A**
Wear: **Wyzenbeek 35,000+**

The image displays a variety of textile materials and a book. At the top, there are several rectangular fabric swatches: a patterned fabric with horizontal bands of brown, white, and red; a solid mustard yellow fabric; a dark charcoal grey fabric with a fine, dense weave; and another patterned fabric with horizontal bands of brown, white, and red. Below these, a book with a light brown wooden cover is positioned. The book's title, 'JIUN HO', is printed in a simple, black, sans-serif font on a white rectangular label. The book is open, revealing two pages of dense, small-print text. A piece of light-colored, textured fabric is draped over the right page. The entire arrangement is set against a background of a fabric with a repeating geometric pattern of black and yellow triangles on a white base.

JIUN HO

LAVA

True linen look, this workhorse fabric will perform outdoors and in. Subtle colorations all nod to the linen inspiration and to the natural stone that inspired the texture.



1027-02_Rice Paper



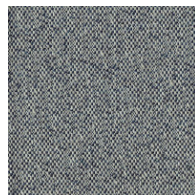
1027-03_Pearl



1027-04_Salt



1027-08_Fawn



1027-64_Glacier

Primary Fiber Content: **100% Solution Dyed Polypropylene**

Fabric Type: **Plain**

Performance: **Performer High Use Indoor/Outdoor**

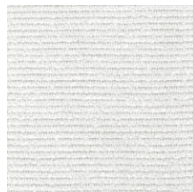
Shown Direction: **Up the Roll**

Design Style: **Plain/Solid**

Wear: **Martindale 40,000+**

AMI

A luxurious and weighty indoor/outdoor ribbed texture,
Ami uses a partially buried bouclé for added dimension.



1084-01_Washi



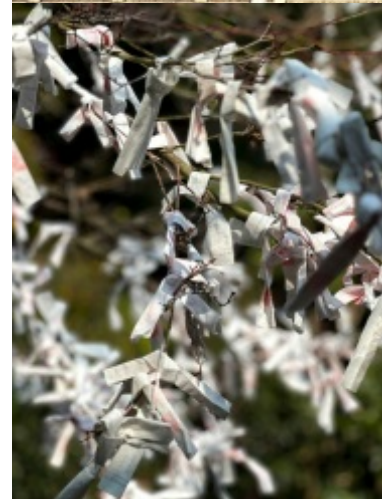
1084-04_Rice Paper



1084-07_Enoki

Primary Fiber Content: **100% Solution Dyed Polypropylene**
Fabric Type: **Texture Plain Bouclé Outdoor Slub Ottoman/Rib**
Performance: **Performer High Use Indoor/Outdoor**

Shown Direction: **Up the Roll**
Use: **Fabric Upholstery Cushions**
Wear: **Wyzenbeek 85,000+**



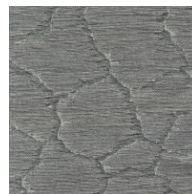
SALAR II

Salar is taken from a photograph of the salt flats of the Atacama desert and rendered in a fine chenille with a glint of sheen highlighting the shadowed weaves.

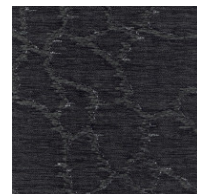
JIUN HO
EXPERIENCE



1086-04_Salt



1086-10_Platinum



1086-17_Onyx

Primary Fiber Content: **100% Polyester**
Fabric Type: **Jacquard**
Performance: **N/A**

Shown Direction: **Up the Roll**
Use: **Fabric Upholstery Cushions**
Wear: **Martindale 25,000+**



RAKU

Raku is a Japanese pottery technique that creates unpredictable and beautiful surface effects. Like its namesake, this indoor/outdoor fabric has a cracked texture and organic multi-color appeal.



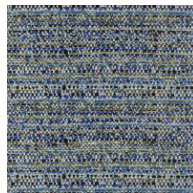
1080-03_Rice Paper



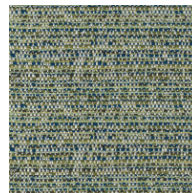
1080-10_Shiitake



1080-29_Kintsugi



1080-65_Mizu



1080-96_Matcha

Primary Fiber Content: **100% Polypropylene**
 Fabric Type: **Performance Outdoor Contract**
 Performance: **Performer High Use Indoor/outdoor**

Shown Direction: **Up the Roll**
 Seam Slippage: **N/A**
 Wear: **Martindale 30,000+**



